

Address Employee Commuting Challenges with a Corporate Carpooling Solution

Optimize your workforce mobility with our smart carpool management system



Addressing Everyday Commuting Challenges

- Long and stressful commutes reduce productivity
- Limited parking disrupts operations
- Public transport remains unreliable and inconsistent
- Traffic congestion causes frequent late arrivals
- Rising fuel and maintenance costs burden employees
- Pressure to adopt sustainable mobility is increasing

Why Corporate Carpooling Is the Future

- Reduces commute-related stress and fatigue
- Optimizes parking space usage
- Minimizes employee travel expenses
- Enhances punctuality and work satisfaction
- Supports your company's green goals
- Promotes a collaborative workplace culture



A Centralized Carpool Management System Built for Enterprises



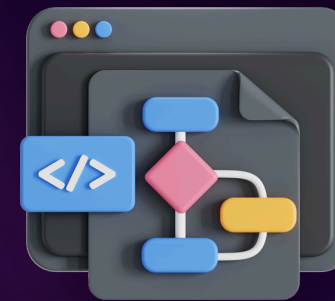
Seamless onboarding
for employees



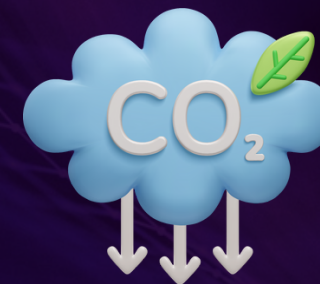
Admin dashboard for
HR/ops control



Data-driven reporting
and compliance support



Intelligent ride-matching
algorithm



Ride tracking, fuel savings,
and CO₂ emission data

Feature-Rich Carpool Software for Smart Workforce Mobility



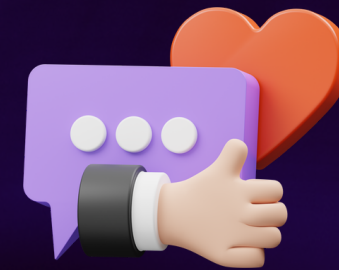
Real-time ride coordination and notifications



Flexible scheduling and multi-route support



User authentication and data security



In-app support and feedback collection



Integration with existing HR systems (optional)

Business Impact of Implementing Corporate Carpooling



Reduced absenteeism and late arrivals



Improved employee retention and morale



Cost savings on parking and transport subsidies



Contribution to ESG and CSR reporting



Stronger employer branding as a green workplace

Ready to Transform Your Employee Commute?



Eliminate
commuting
stress



Lower
operational
costs



Promote
sustainability across
your organization

**Get started with our corporate
carpooling solution today.**

Contact Us

 +1-855-572-2777  | +91-858-600-8627 

 business@mobisoftinfotech.com

 <https://mobisoftinfotech.com/solutions/corporate-carpooling-solution>

