

Lenovo
AURA EDITION
imagined with Intel



 Copilot+PC

6 Data Protection Layers Inside an AI PC for Business

Every business works with data daily—files, emails, plans, and client records. Over 60% of small companies faced at least one cyberattack. Modern [AI PC for Business](#) create a strong safety wall with six intelligent protection layers working together.

Smart Hardware Security That Starts at Power On

The first layer begins the moment the system starts. Hardware security checks the device before any work begins, blocking bad code early and keeping fake software away.

Smart chips scan for changes and stop threats before they grow. This layer protects core parts—memory storage and startup files—building trust from the first second of use.

Stops Fake Files

Blocks unauthorized startup code

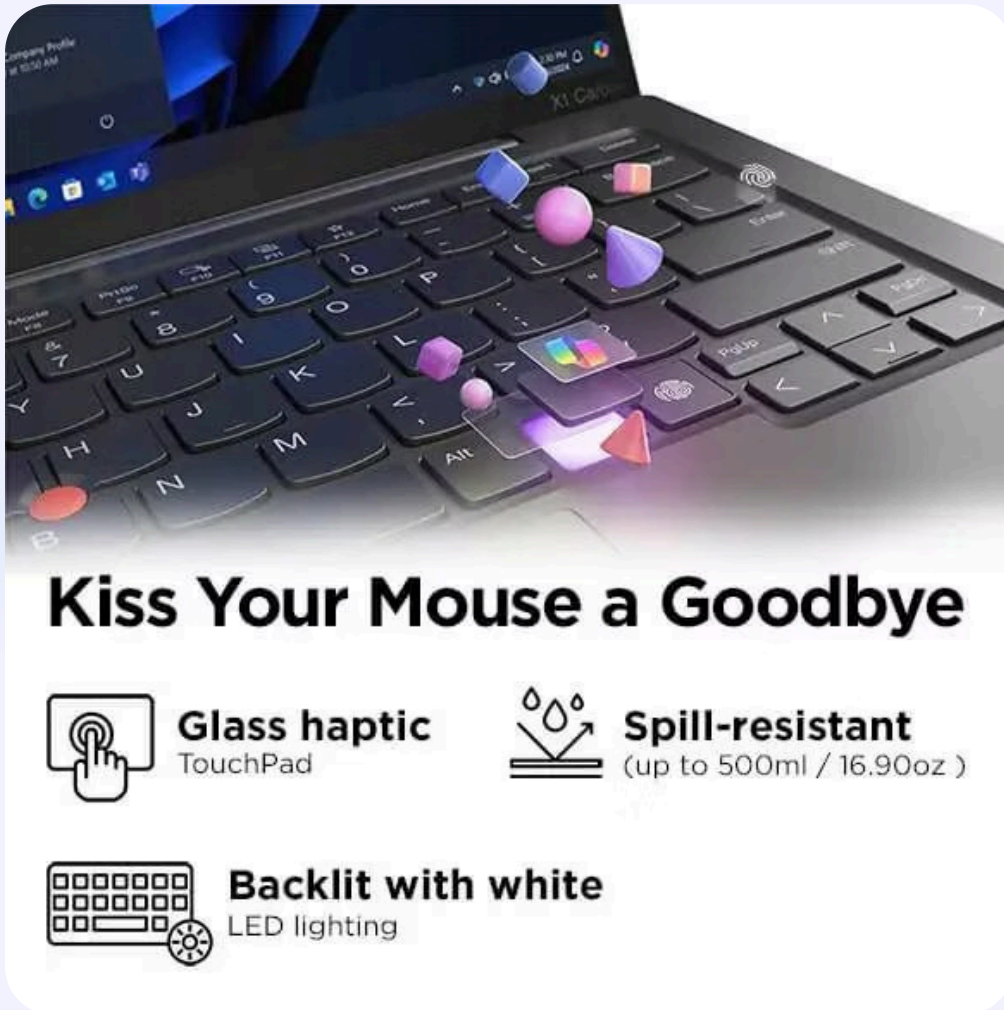
Protects Memory

Guards system storage

Keeps Core Clean

Maintains system integrity

Biometric Access That Confirms Real Users



Passwords alone no longer feel enough. People reuse them and forget them. The third layer adds biometric access using face scans or fingerprint scans.

AI learns from real users over time and spots fake attempts faster. This layer helps teams work faster while reducing login errors.



Quick & Personal

Biometric features are fast and unique to each user



AI Learning

System improves accuracy over time

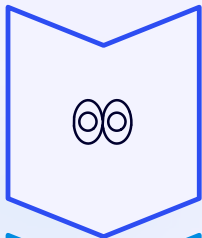


Fake Detection

Identifies unauthorized access attempts

AI Threat Detection That Watches Every Move

Threats don't always arrive through files—some hide in actions. The fourth layer focuses on behavior, watching how the system works and looking for strange activity.



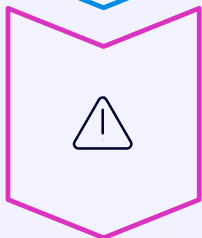
Continuous Monitoring

AI watches system activity all day without breaks



Learning System

Learns from past threats to improve detection



Fast Response

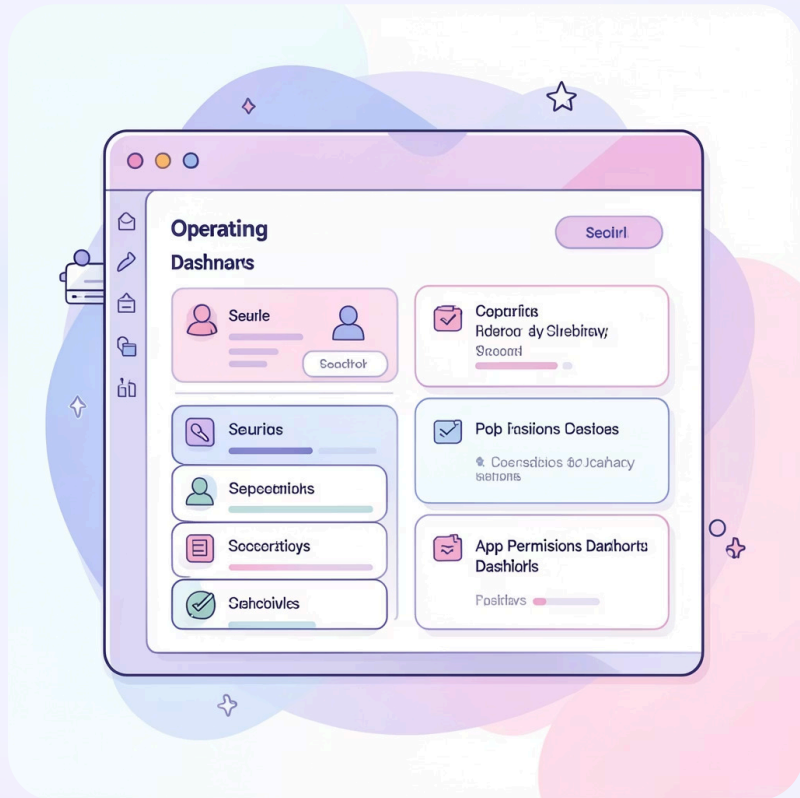
Reacts immediately when spotting odd behavior

What this layer catches: Unknown apps trying to run, sudden data changes, and unsafe background actions.

Smart Modes, Smarter Technology



OS-Level Protection That Controls App Behavior



The operating system controls how apps work, making it a key security point. The fifth layer checks app permissions and limits what each app can do.

It stops apps from accessing data they don't need. An AI PC keeps this layer updated—updates fix gaps and close doors.

- **Stops Risky Apps**
Blocks unauthorized applications
- **Limits Data Sharing**
Controls information access
- **Keeps Work Apps Safe**
Protects business tools

Below System Defense That Stays Hidden



Deep Protection

Works under the operating system to watch deep system actions



Hidden Defense

Blocks threats that normal tools miss while staying unseen



Smart Engines

Run quietly and stay alert at all times without slowing work

Some threats try to hide below the system, aiming to stay unseen. This sixth layer handles this risk, adding strong backup that supports all other layers.



When Reliability Isn't Optional

From **986g** Light

From **8.08mm** Slim

Lenovo **ThinkShield** Security

How All Six Layers Work Together



Each layer plays a role. None works alone. This teamwork creates full protection and builds confidence. Teams can focus on work, not worry.

The Business Impact

60%

Attack Rate

Small companies facing cyberattacks

6

Protection Layers

Working together seamlessly

0

Slowdown

Security without performance loss

What You Get

- Full protection at every step
- Smooth workflow without interruption
- Confidence in data security

Why It Matters

- Threats grow more sophisticated
- Protection must evolve
- Layered security stays ready



Next-Level Intelligence



Up to Intel® Core™ Ultra 7
(Series 2) processor



Premium
AI PC

Up to **48 TOPs** NPU



Lenovo Aura Edition
Experience

Stay Protected, Stay Productive

Data drives every business decision. When data remains secure, work proceeds smoothly. The six data protection layers inside an AI PC for business create a strong defense.

Layered Defense

Each layer supports the next, forming a smart shield that protects users, files, and systems at every step.

No Slowdown

These layers don't slow down work—they guide it, working seamlessly in the background.

Future Ready

Choosing an AI PC means trusting technology that works with you and staying ready for what comes next.