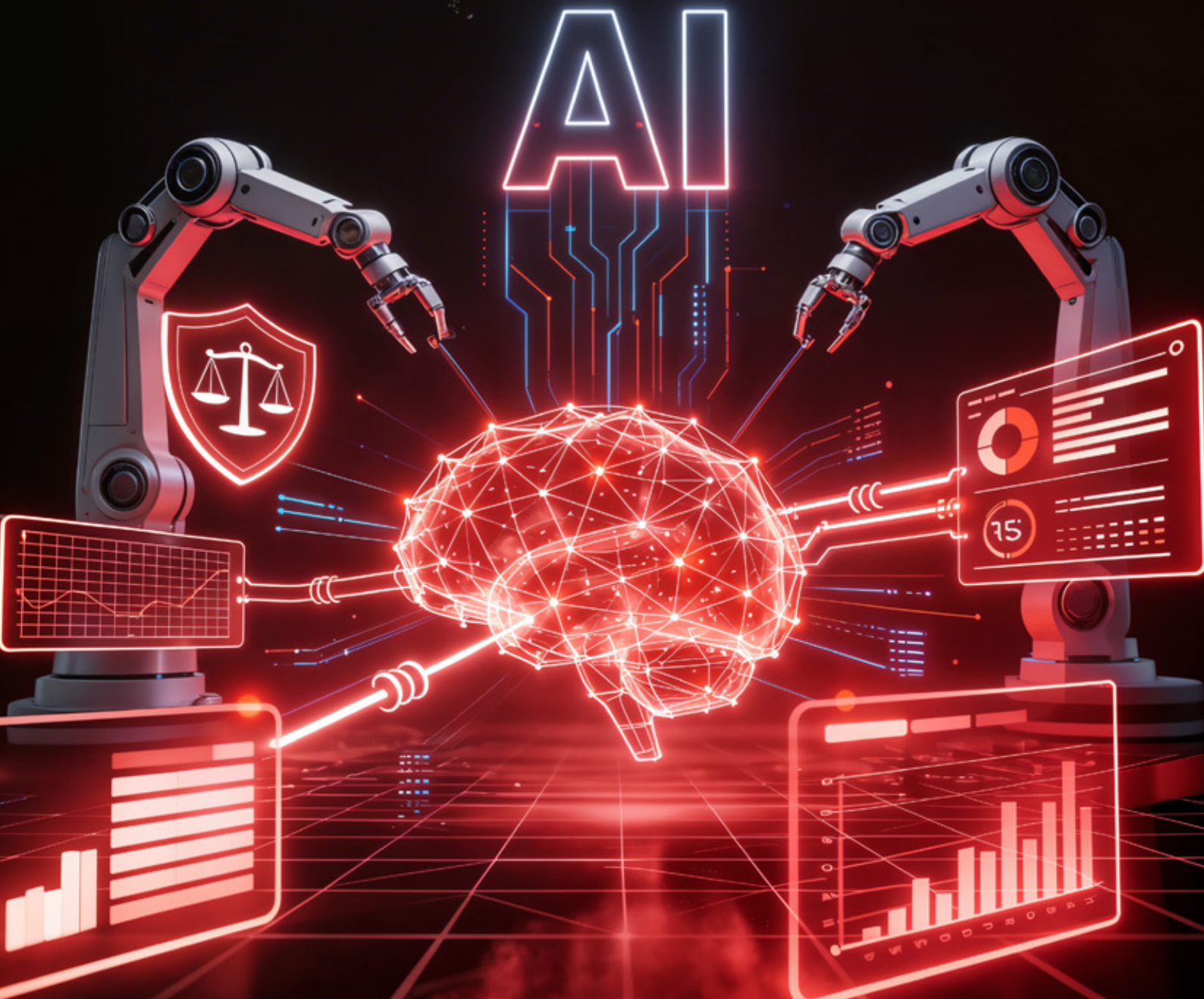


THE FUTURE OF GRC

AI, AUTOMATION, AND REGULATORY CONVERGENCE



Introduction

Governance, Risk, and Compliance (GRC) functions are undergoing a fundamental transformation. Once viewed primarily as audit-support or compliance-enablement teams, GRC functions are now expected to provide real-time risk insight, strategic guidance, and regulatory foresight.

This shift is driven by three powerful forces:
artificial intelligence, automation, and regulatory convergence.

As organizations adopt cloud-native architectures, integrate AI into core business processes, and operate across multiple jurisdictions, traditional manual and framework-specific GRC models are no longer sustainable. The future of GRC lies in intelligent, automated, and integrated governance models that can keep pace with evolving risks and regulations.

The Changing Role of GRC

Historically, GRC programs focused on:

- Periodic risk assessments
- Manual evidence collection
- Framework-by-framework compliance
- Reactive audit preparation

While effective in simpler environments, this model struggles in today's landscape, where:

- Risks evolve continuously
- Regulations overlap and change rapidly
- Audit expectations are increasing
- Leadership demands real-time visibility

Modern GRC is no longer just about demonstrating compliance. It is about anticipating risk, enabling informed decisions, and supporting business agility.



AI in GRC: From Manual Oversight to Intelligent Insight

Artificial intelligence is rapidly redefining how organizations manage governance and risk.

Intelligent Risk Identification

AI-driven tools can analyze vast datasets like logs, tickets, configurations, user behavior, and third-party information to identify emerging risks that may not be visible through traditional assessments.

This allows organizations to:

- Detect anomalies and control failures early
- Identify high-risk patterns across systems
- Prioritize risks based on likelihood and impact

Smarter Control Testing and Audits

AI is increasingly being used to:

- Validate system-generated reports
- Analyze evidence completeness and consistency
- Support risk-based sampling

This reduces reliance on manual testing and improves audit accuracy while allowing GRC teams to focus on higher-value analysis.

Predictive Risk Management

Rather than relying solely on historical data, AI enables predictive insights by helping organizations anticipate where risks are likely to emerge based on trends, behavior, and system changes.

Automation: Redefining GRC Operations

Automation is the foundation that allows GRC to scale effectively.

Continuous Control Monitoring

Automation enables controls to be monitored continuously rather than reviewed periodically. Access reviews, configuration checks, and policy compliance can be validated in near real time.

This shift reduces:

- Audit-season pressure
- Evidence gaps
- Dependence on individual knowledge

Automated Evidence Collection

One of the most significant operational improvements comes from automating evidence collection from source systems such as IAM platforms, ticketing tools, cloud environments, and SIEM solutions.

Benefits include:

- Reduced manual effort
- Improved consistency and traceability
- Faster audit cycles

Workflow Automation and Accountability

Automated workflows ensure:

- Timely remediation tracking
- Clear ownership of risks and controls
- Better coordination across teams

This transforms GRC from a reactive function into an operationally embedded discipline.

Regulatory Convergence: Managing Overlapping Requirements

Organizations today rarely operate under a single regulation. Instead, they face overlapping and intersecting requirements across cybersecurity, privacy, and industry-specific regulations.

Examples include:

- ISO 27001 overlapping with NIST CSF
- GDPR intersecting with DPDP Act and HIPAA
- PCI DSS coexisting with enterprise-wide ISMS programs

This regulatory convergence creates both complexity and opportunity.

Control Harmonization

Rather than managing each framework separately, organizations are increasingly mapping controls across multiple regulations, reducing duplication and improving consistency.

Unified Risk and Compliance View

Modern GRC platforms support a single source of truth for risks, controls, and compliance status across frameworks.

Strategic Compliance Planning

Regulatory convergence enables organizations to plan compliance strategically anticipating upcoming regulations and aligning governance structures proactively.

How These Trends Are Reshaping GRC Teams

The future GRC professional looks different from the past.

Key shifts include:

- From evidence collection to risk analysis
- From framework expertise to cross-regulatory understanding
- From audit support to strategic advisory

GRC teams are increasingly expected to:

- Communicate risk in business terms
- Support executive and board-level decisions
- Collaborate closely with IT, security, legal, and business units

This evolution elevates GRC from a control-focused function to a core component of enterprise risk management.

Challenges to Adoption

Despite the clear benefits, adopting AI-driven and automated GRC models is not without challenges.

Common barriers include:

- Data quality and integration issues
- Resistance to change from manual processes
- Skills gaps within GRC teams
- Over-reliance on tools without governance maturity

Successful adoption requires a balanced approach by combining technology enablement with strong governance foundations and skilled professionals.

Preparing for the Future of GRC

Organizations looking to modernize their GRC programs should consider the following steps

1. Assess current GRC maturity and identify automation opportunities
2. Invest in integrated GRC platforms rather than isolated tools
3. Develop AI and data literacy within GRC teams
4. Adopt a risk-based governance model to guide priorities
5. Design controls with regulatory convergence in mind

These steps ensure technology enhances governance rather than complicating it.

Conclusion

The future of GRC is not defined by more controls or more documentation. It is defined by intelligence, automation, and integration.

AI enables deeper risk insight, automation delivers operational efficiency, and regulatory convergence provides an opportunity to simplify compliance while strengthening governance. Organizations that embrace these trends will move beyond reactive compliance and position GRC as a strategic enabler of resilience and trust.

In an environment where risk evolves continuously and regulations expand globally, modern GRC is no longer optional, but it is foundational to sustainable business operations.



READY TO ENHANCE YOUR DIGITAL RESILIENCE?

Follow us for daily tips!



For expert consulting and professional advice, please reach out to
sales@azpirantz.com

**This content has been created and published by the Azpirantz
Marketing Team and should not be considered a professional advice*